



Inflammasome and TLR

Innate Immunity · Acute phase proteins · Western blot · **TLR** · Antimicrobial peptides · Complement Research · LPS, Microbial toxins · Flow cytometry · Scavenger receptors · **Assays** · Inflammation · Adhesion molecules · **Immunohistochemistry** · Coagulation molecules · Cytokines · Chemokines · **Antibodies** · Cell & Tissue damage · Functional studies · Lipid binding proteins · Immunoprecipitation · Oxidative stress · Organ & Tissue related research · **Proteins**



General introduction

Hycult Biotech develops, produces and markets antibodies, antibody based products and more specifically immunoassays for innate immunity and directly related fields, with an emphasis on complement, neutrophil proteins, TLR, scavenger receptors and acute phase proteins. Furthermore, we have a strong interest in progressing research in the area of inflammation and cell damage caused by pathogens or oxidation factors.

Introduction product group

Toll like receptors (TLRs) are a class of non-catalytic receptors that function as pattern recognition receptors (PRRs). These receptors recognize pathogen-associated molecular patterns (PAMPs) that are shared by large groups of microorganisms, but also endogenous alarm signals, like apoptosis related membrane fragments and inflammatory ligands. Common cytoplasmic domains allow TLRs to use the same signaling molecules used by the interleukin-1 receptors (IL-1Rs), including MyD88 and TRIF. In man both intracellular and extracellular TLR exist in humans. The intracellularly located TLR9 confers responses to bacterial DNA via species-specific CpG-motif recognition. Therefore, CpG-DNA can be used to investigate TLR9 response in various systems.

More information about products within the field of Innate Immunity, Antimicrobial peptides, Microbial toxins, TLR, Inflammation, Cell & Tissue damage, Lipid binding proteins and Oxidative stress can be found on our website. Please feel free to subscribe to our newsletter to remain up-to-date on Hycult Biotech's product information!

Hycult Biotech has worldwide distribution through a network of over 45 distributors.

If you have any questions regarding pricing and ordering, please contact your local distributor. Distributor information can be found on our website.

We believe technical support is essential when using our products or when looking into buying them for your research needs. For product specific information please visit our website: www.hycultbiotech.com or contact us on support@hycultbiotech.com.

In this Product Folder the following abbreviations for the applications have been used:

FC: Flow Cytometry
FS: Functional studies
IA: Immunoassays
IF: Immunofluorescence
IHC: Immunohistochemistry
F: Frozen sections
P: Paraffin sections
IP: Immunoprecipitation
W: Western Blot

Assays

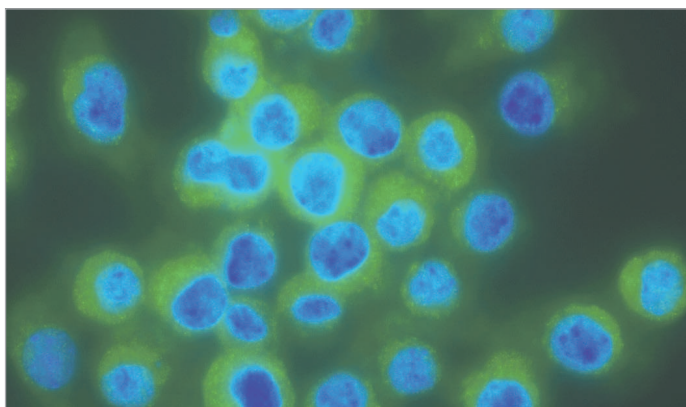
Product description	Quantity	Cat.#
sCD14, Human, ELISA kit	1 x 96 det.	HK320

Ligands

Product description	Quantity	Cat.#
CpG-A DNA (ODN 2216), Human/Mouse	200 nmol	HC4037
CpG-B DNA (ODN 2006), Human/ Mouse	200 nmol	HC4039
CpG-B DNA, Rat	200 nmol	HC4040
CpG-C DNA (ODN 2395), Human/ Mouse	200 nmol	HC4041
CpG-DNA, Mouse	200 nmol	HC4033
Lipid A from E.coli, Serotype R515 (Re)	1 mg	HC4049
Lipid A from Salmonella minnesota, R595 (Re)	1 mg	HC4057
LPS from E.coli Serotype O55:B5	1 mg	HC4045
LPS from E.coli, Serotype EH100 (Ra)	1 mg	HC4046
LPS from E.coli, Serotype J5 (Rc)	1 mg	HC4047
LPS from E.coli, Serotype O8:K27	1 mg	HC4065
LPS from E.coli, Serotype R515 (Re)	1 mg	HC4048
LPS from Salmonella abortus equi, S-form	1 mg	HC4061
LPS from Salmonella enteritidis, S-form	1 mg	HC4059
LPS from Salmonella minnesota, R345 (Rb)	1 mg	HC4053
LPS from Salmonella minnesota, R5 (Rc)	1 mg	HC4054
LPS from Salmonella minnesota, R595 (Re)	1 mg	HC4056
LPS from Salmonella minnesota, R7 (Rd)	1 mg	HC4055
LPS from Salmonella minnesota, S-form	1 mg	HC4051
LPS from Salmonella Minnesota. R60 (Ra)	1 mg	HC4052
LPS from Salmonella typhimurium, S-form	1 mg	HC4060
LPS set: 2 x LPS, 1 x Lipid A and 1 x MPL-A from E.coli	2x 0.5 mg and 2x 0.25 mg	HC4064

Ligands

Product description	Quantity	Cat.#
LPS set: 2 x LPS, 1 x Lipid A and 1 x MPL-A from Salmonella minnesota	2x 0.5 mg and 2x 0.25 mg	HC4063
MPL-A from E.coli, R515 (Re)	0.5 mg	HC4050
MPL-A from Salmonella minnesota, R595 (Re)	0.5 mg	HC4058
Non CpG-DNA, Human/Mouse	200 nmol	HC4034
Non CpG-DNA, Rabbit	200 nmol	HC4042
RNA:DNA Hybrid	200 nmol	HC4072
TLR2/TLR1 Ligand	50 µg	HC4068
TLR2/TLR1 ligand control	50 µg	HC4069
TLR2/TLR6 Ligand	50 µg	HC4070
TLR2/TLR6 ligand control	50 µg	HC4071
TLR3/MDA5 Agonist	5 mg	HC4067



Mouse TLR2 in RAW cells. Staining with antibody 6C2 (Cat.# HM1047F).

Antibodies

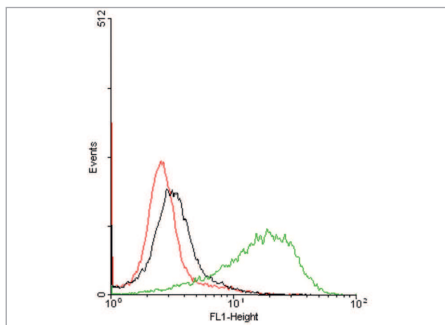
Human

Product description	Clone name	Quantity	Applications	Cat. #
CD14	18D11	100 µg	FC FS	HM2224
CD180	MHR73	100 µg	FC F FS IP P	HM2083
CD180, biotinylated	MHR73	50 µg	FC F	HM2084
CD180, FITC	MHR73	100 µg	FC F FS IP	HM2083F
MD-2	18H10	100 µg	FC FS	HM2245
MD-2, biotinylated	18H10	50 µg	FC	HM2245BT
MD-2, FITC	18H10	100 µg	FC FS	HM2245F
NOD-1	2A10	100 µg	F IF IP W	HM2290
NOD-2	hNOD2.017	100 µg	IF IP P W	HM2291
sMD-2 and sMD-2/TLR4	4H1	100 µg	FS IA IF W	HM2243
sMD-2 and sMD-2/TLR4, FITC	4H1	100 µg	FS IA IF W	HM2243F
TLR1	GD2.F4	100 µg	FC F FS IA IF P	HM2085
TLR1, biotinylated	GD2.F4	50 µg	FC F FS IA IF P	HM2086
TLR1, FITC	GD2.F4	100 µg	FC F FS IA IF P	HM2085F
TLR1, PE	GD2.F4	25 tests	FC F FS IA IF P	HM2085PE-25
TLR1, PE	GD2.F4	100 tests	FC F FS IA IF P	HM2085PE-100
TLR2	T2.1	100 µg	FC F FS IF IP P W	HM2064
TLR2, biotinylated	T2.1	50 µg	FC F FS IF IP P W	HM2065
TLR2, FITC	T2.1	100 µg	FC F P W	HM2064F
TLR2, functional study antibody	T2.1	0.5 mg	FC F FS IF IP P W	HM2064-FS
TLR2, PE	T2.1	25 tests	FC F FS IF IP P W	HM2064PE-25
TLR2, PE	T2.1	100 tests	FC F FS IF IP P W	HM2064PE-100
TLR2	T2.3	100 µg	FC IA W	HM2066
TLR2, biotinylated	T2.3	50 µg	FC IA W	HM2067
TLR2, FITC	T2.3	100 µg	FC F IA IF W	HM2066F
TLR2, PE	T2.3	25 tests	FC IA W	HM2066PE-25
TLR2, PE	T2.3	100 tests	FC IA W	HM2066PE-100
TLR2	T2.5	100 µg	FC F FS IA IF IP	HM1054
TLR2, FITC	T2.5	100 µg	FC F FS IA IF IP	HM1054F
TLR2, functional study antibody	T2.5	0.5 mg	FC F FS IA IF IP	HM1054-FS
TLR2	TLR2.45	100 µg	IF	HM2220
TLR2, biotinylated	TLR2.45	50 µg	IF	HM2220BT
TLR2, FITC	TLR2.45	100 µg	IF	HM2220F
TLR3	TLR3.7	100 µg	FC F FS IF IP P W	HM2096
TLR3, biotinylated	TLR3.7	50 µg	FC F FS IF IP P W	HM2097
TLR3, FITC	TLR3.7	100 µg	FC F FS IF IP P W	HM2096F
TLR3, functional study antibody	3C3	0.5 mg	FC F FS IF IP P W	HM2096-FS
TLR4	3C3	100 µg	FC FS	HM2247
TLR4, biotinylated	3C3	50 µg	FC	HM2247BT
TLR4, FITC	3C3	100 µg	FC	HM2247F
TLR4	4D9	100 µg	FC IA IP W	HM2298
TLR4	HTA125	100 µg	FC FS IA IF IP W	HM2068
TLR4, biotinylated	HTA125	50 µg	IF IP W	HM2069
TLR4, FITC	HTA125	100 µg	FC FS IA IF IP W	HM2068F
TLR4, PE	HTA125	25 tests	FC FS IA IF IP W	HM2068PE-25
TLR4, PE	HTA125	100 tests	FC FS IA IF IP W	HM2068PE-100
TLR4/MD-2	7E3	100 µg	FC FS	HM2246
TLR4/MD-2, FITC	7E3	100 µg	FC	HM2246F
TLR4/MD-2, functional study antibody	7E3	0.5 mg	FC FS	HM2246-FS
TLR5	19D759.2	100 µg	FC F IF P W	HM2159
TLR5, FITC	19D759.2	100 µg	FC F IF P W	HM2159F
TLR6	TLR6.127	100 µg	FC FS IF IP P	HM2221
TLR6, FITC	TLR6.127	100 µg	IF	HM2221F
TLR6, PE	TLR6.127	25 tests	FC FS IF IP P	HM2221PE-25
TLR6, PE	TLR6.127	100 tests	IF IP P	HM2221PE-100
TLR7	pAb	100 µg	FC F IF IP W	HP9040
TLR8	44C143	100 µg	FC IF P W	HM2160
TLR8, FITC	44C143	100 µg	FC IF P W	HM2160F
TLR9	5G5	100 µg	FC F IA IF P W	HM2087
TLR9, biotinylated	5G5	50 µg	FC F IA IF P W	HM2088
TLR9, FITC	5G5	100 µg	IA IF P W	HM2087F
TLR10	3C10C5	100 µg	FC IA	HM2302

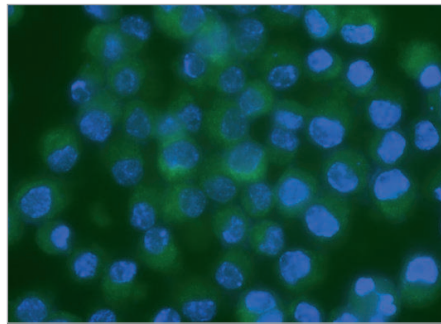
Antibodies

Mouse

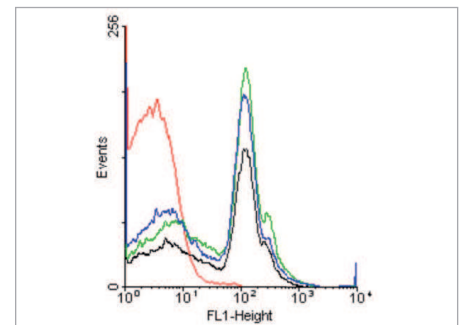
Product description	Clone name	Quantity	Applications	Cat. #
CD14	Sa14-2	100 µg	FC FS IF W	HM1060
CD14, FITC	Sa14-2	100 µg	FC FS IF	HM1060F
CD14, functional study antibody	Sa14-2	0.5 mg	FC FS IF	HM1060-FS
CD14, R-PE labeled	Sa14-2	25 tests	FC FS IF	HM1060PE-25
CD14, R-PE labeled	Sa14-2	100 tests	FC FS IF	HM1060PE-100
CD180	RP/14	100 µg	FC FS	HM1031
CD180, biotinylated	RP/14	50 µg	FC	HM1032
CD180, FITC	RP/14	100 µg	FC	HM1031F
MD-1	MD113	100 µg	FC FS	HM1040
MD-1, biotinylated	MD113	50 µg	FC	HM1041
MD-1, FITC	MD113	100 µg	FC	HM1040F
MD-1, R-PE labeled	MD113	25 tests	FC	HM1040PE-25
MD-1, R-PE labeled	MD113	100 tests	FC	HM1040PE-100
TLR2	6C2	100 µg	FC IF IP	HM1047
TLR2, biotinylated	6C2	50 µg	FC	HM1048
TLR2, FITC	6C2	100 µg	FC IF	HM1047F
TLR2, R-PE labeled	6C2	25 tests	FC IF IP	HM1047PE-25
TLR2, R-PE labeled	6C2	100 tests	FC IF IP	HM1047PE-100
TLR2	mT2.4	100 µg	FC F FS IA P	HM1092
TLR2, FITC	mT2.4	100 µg	FC F FS IA P	HM1092F
TLR2	mT2.7	100 µg	FC F IP P	HM1058
TLR2, biotinylated	mT2.7	50 µg	FC F	HM1059
TLR2, FITC	mT2.7	100 µg	FC F IA	HM1058F
TLR2, R-PE labeled	mT2.7	25 tests	FC F IP P	HM1058PE-25
TLR2, R-PE labeled	mT2.7	100 tests	FC F IP P	HM1058PE-100
TLR2	pAb	50 µg	FC W	HP8016
TLR2, functional study antibody	T2.5	0.5 mg	FC F FS IA IF IP	HM1054-FS
TLR4/MD-2	MTS510	100 µg	FC F FS IP	HM1029
TLR4/MD-2, biotinylated	MTS510	50 µg	FC F FS IP	HM1030
TLR4/MD-2, FITC	MTS510	100 µg	FC F FS IP	HM1029F
TLR4/MD-2, functional study antibody	MTS510	0.5 mg	FC F FS IP	HM1029-FS
TLR4/MD-2, R-PE labeled	MTS510	25 tests	FC F FS IP	HM1029PE-25
TLR4/MD-2, R-PE labeled	MTS510	100 tests	FC F FS IP	HM1029PE-100
TLR9	5G5	100 µg	FC F IA P W	HM1042
TLR9, biotinylated	5G5	50 µg	IA W	HM1043
TLR9, FITC	5G5	100 µg	FC F IA P W	HM1042F



Flow cytometric detection of THP cells with monoclonal antibody to human MD-2 (mAb 18H10, Cat.# HM2245). Red is blanco. Black is isotype mouse IgG1 5µg/ml. Green is 5 µg/ml mAb 18H10.



MD-1 in RAW cells. Staining with antibody MD113 (Cat.# HM1040F).



Flow cytometric detection of mouse BM resident peritoneal cells with monoclonal antibody to mouse TLR4/MD2 (mAb MTS510, Cat.# HM1029F). Red is negative control. Black, green and blue are respectively 4, 2 and 1 µg/ml HM1029F.



Hycult Biotech
Frontstraat 2A
5405 PB Uden
The Netherlands

T +31(0)413 251335
F +31(0)413 248353
E info@hycultbiotech.com

Hycult Biotech Inc.
600 West Germantown Pike
Suite 110
Plymouth Meeting, PA 19462
USA

T: +1 484 5343566 Toll Free: 855-2-HYCULT (855-2-492858)
F: +1 484 3683558
E: orders-us@hycultbiotech.com

Hycult Biotech is distributed by: