

**R-PE LABELED MONOCLONAL ANTIBODY TO
MOUSE MD-1**
clone MD113



Catalog no HM1040PE-100 (lot number and expiry date are indicated on the label)

Description The monoclonal antibody MD113 reacts with mouse MD-1. MD-1 (22-25 kD) is an extracellular protein associated with the extracellular domain of RP105. The latter is a type 1 transmembrane protein with leucine-rich repeats. RP105 is similar to Drosophila Toll. MD-1 associated with RP105 (similar to TLR4/MD-2) appears to be an essential molecule that helps RP105 on B-cells to signal to LPS. The MD113 antibody is antagonistic in LPS-induced B-cell proliferation and B7.2 up-regulation.

Species Rat IgG_{2b}

Immunogen NRK cells expressing mouse RP105/MD-1

Formulation 100 tests of 0.2 µm filtered R-PE conjugated antibody solution in PBS, containing 1% bovine serum albumin and 0.02% sodium azide.

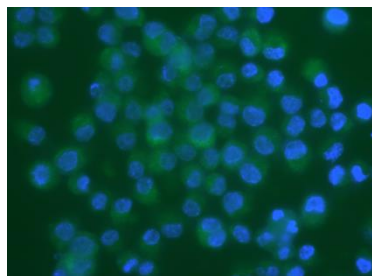
Application

	F	FC ²	FS ²	IA	IF	IP	P	W
Yes		•	•		•			
No						•		•
N.D.	•			•			•	

N.D.= Not Determined; F = Frozen sections; FC = Flow Cytometry; FS = Functional Studies; IA = Immuno Assays; IF = Immuno Fluorescence; IP = Immuno Precipitation; P = Paraffin sections; W = Western blot
Application IF has been tested by Hycult Biotech. Application x is/are based on personal communication.

Application notes

IF: Antibody MD113 stains MD-1. As positive control monocytes were used and as negative control RAW cells.



MD-1 on monocytes. Immuno fluorescence with antibody MD113 (Cat. # HM1040). Anti-mouse MD-1 at 2µg/ml (o/n, 4°C) resulted in the specific staining of Golgi apparatus.

References

1. Miyake, K et al; Mouse MD-1, a molecule that is physically associated with RP105 and positively regulates its expression. J Immunol 1998, 161: 1348
2. Nagai, Y et al; Requirement for MD-1 in cell surface expression of RP105/CD180 and B-cell responsiveness to lipopolysaccharide. Blood 2002, 99: 1699

Use

For flow cytometry dilutions to be used depend on detection system applied. It is recommended that users test the reagent and determine their own optimal dilutions. The recommended use of this reagent is 10 µl per 250.000 cells in a 100 µl total staining volume.

Positive control

Monocytes

Negative control

RAW cells

Storage and stability

Product should be stored at 4°C. Under recommended storage conditions, product is stable for at least one year. The exact expiry date is indicated on the label.

Precautions For research use only. Not for use in or on humans or animals or for diagnostics. It is the responsibility of the user to comply with all local/state and federal rules in the use of this product. Hycult Biotech is not responsible for any patent infringements that might result from the use or derivation of this product.

Also available

HM1040F	FITC conjugated monoclonal antibody against mouse MD-1, clone MD113
HM1041	Biotinylated monoclonal antibody against mouse MD-1, clone MD113
HM1031	Monoclonal antibody against mouse RP105 (CD180), clone RP/14
HM1032	Biotinylated monoclonal antibody against mouse RP105 (CD180), clone RP/14
HM1029	Monoclonal antibody against mouse TLR4/MD2, clone MTS510