

## CERTIFICATE OF ANALYSIS – TECHNICAL DATA SHEET

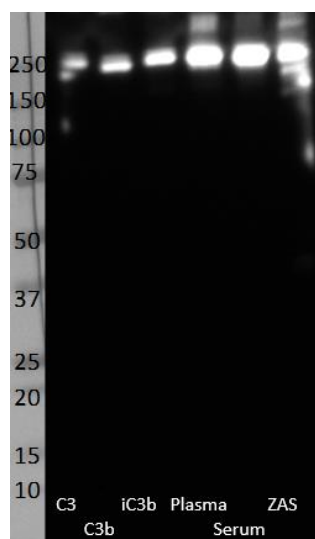
<b>Product name</b>	C3/C3b/iC3b (alpha chain), Human, clone 18.1		
<b>Catalog number</b>	HM2389-100UG		
<b>Lot number</b>	xxxxxXxxxx	<b>Expiry date</b>	MMM YYYY
<b>Volume</b>	1 ml	<b>Amount</b>	100 µg
<b>Formulation</b>	0.2 µm filtered in PBS+0.1%BSA+0.02%NaN3	<b>Concentration</b>	100 µg/ml
<b>Host Species</b>	Mouse IgG1	<b>Conjugate</b>	None
<b>Endotoxin</b>	N.A.	<b>Purification</b>	Protein G
<b>Storage</b>	4°C		

### Application notes

	IHC-F	IHC-P	IF	FC	FS	IA	IP	W
Reference #								
Yes						•		•
No								
N.D.	•	•	•	•	•		•	

N.D. = Not Determined; IHC = Immuno histochemistry; F = Frozen sections; P = Paraffin sections; IF = Immuno Fluorescence; FC = Flow Cytometry; FS = Functional Studies; IA = Immuno Assays; IP = Immuno Precipitation; W = Western blot

Dilutions to be used depend on detection system applied. It is recommended that users test the reagent and determine their own optimal dilutions. The typical starting working dilution is 1:50.



W: Western blot using antibody HM2389 at 2 µg/ml. Proteins C3, C3b and iC3b were resolved on gel under non-reducing conditions. As well as, EDTA plasma pool, Complement preserved serum and Zymosan activated serum (ZAS).

- IA: Antibody 18.1 can be used as detection antibody.
- W: Non-reduced sample treatment was used for in-house testing. HM2398 recognizes C3 (~190 kDa), C3b (~180 kDa) and iC3b (~178 kDa). Pending the quality of samples, be aware that several breakdown products can be visible.

### General Information

<b>Description</b>	The antibody clone 18.1 recognizes complement C3, C3b and iC3b (both in Western blot and immunoassay) and, to a lesser extent, also C3c and C3d (only immuno assays). The specific epitope is on the alpha chain domain MG8-C345C.
--------------------	--

The complement system plays important roles in both innate and adaptive immune response and can produce an inflammatory and protective reaction to challenges from pathogens before an adaptive response can occur. It consists of a complex family of proteins and receptors which are found in the circulation, in tissues and other body-fluids. There are three pathways of complement activation. The classical pathway is initiated by immune complexes; the lectin pathway by surface bound lectins; and the AP by all the surfaces that are not specifically protected against it. Each generates a C3 convertase, a serine protease that cleaves the central complement protein C3, and generates the major cleavage fragment C3b. The C3 and C5 convertases are enzymatic complexes that initiate and amplify the activity of the complement pathways and ultimately generate the cytolytic MAC. The synthesis of C3 is tissue-specific and is modulated in response to a variety of stimulatory agents. After cleavage by C3 convertase the anaphylotoxin C3a and activating C3b are formed. When bound to the cell surface C3b forms the start of the terminal pathway of complement by initiating the formation of the C5 convertase. C3 has a molecular weight of app. 185kDa and is the most abundant protein of the complement system with serum protein levels of about 1.3 mg/ml. C3 is primarily produced by the liver but is also generated in macrophages, neutrophils, endothelial and epithelial cells. Due to the high levels in circulation with low biological reactivity, C3 is able to act in a fast and potent way when danger by e.g. pathogens is encountered. Defects in C3 can be unfavorable to the host leading to recurrent infections or auto-immune diseases. Although rare, C3 deficiency has been reported. These patients suffer from recurrent infections of e.g. S.pneumoniae or N.meningitidis due to lack of opsonization, but also impaired DC and Treg development. Polymorphism in C3 has been associated with AMD and aHUS. Besides clearance of pathogens, C3 is also important in removal of circulating immune-complexes by assisting the phagocytic capacity of macrophages. Malfunction of this system can lead to development of auto-immune disease and complement deposition in tissues.

<b>Immunogen</b>	Denatured and reduced C3
<b>Storage&amp;stability</b>	Product should be stored at 4°C. Under recommended storage conditions, product is stable for at least one year.
<b>Precautions</b>	For research use only. Not for use in or on humans or animals or for diagnostics. It is the responsibility of the user to comply with all local/state and federal rules in the use of this product. Hycult Biotech is not responsible for any patent infringements that might result from the use or derivation of this product.

---

We hereby certify that the above-stated information is correct and that this product has been successfully tested by the Quality Control Department. This product was released for sale according to the existing specifications. This document has been produced electronically and is valid without a signature.

Approved by Manager of QC

Date

Do you have any questions or comments regarding this product? Please contact us via [support@hycultbiotech.com](mailto:support@hycultbiotech.com).