

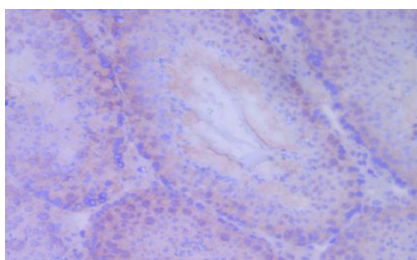
CERTIFICATE OF ANALYSIS – TECHNICAL DATA SHEET

| | | | |
|-----------------------|--|----------------------|-----------|
| Product name | MCP-1, Mouse, clone ECE.2 | | |
| Catalog number | HM1019-100UG | | |
| Lot number | - | Expiry date | - |
| Volume | 1 ml | Amount | 100 µg |
| Formulation | 0.2 µm filtered in PBS+0.02%NaN3+0.1%BSA | Concentration | 100 µg/ml |
| Host Species | Rat IgG1 | Conjugate | None |
| Endotoxin | N.A. | Purification | Protein G |
| Storage | 4°C | | |

Application notes

| | IHC-F | IHC-P | IF | FC | FS | IA | IP | W |
|-------------|-------|-------|----|----|----|----|----|---|
| Reference # | 3 | | | | | | | 1 |
| Yes | • | | | | | | | • |
| No | | • | | | | | | |
| N.D. | | | • | • | • | • | • | |

N.D. = Not Determined; IHC = Immuno histochemistry; F = Frozen sections; P = Paraffin sections; IF = Immuno Fluorescence; FC = Flow Cytometry; FS = Functional Studies; IA = Immuno Assays; IP = Immuno Precipitation; W = Western blot



IHC-F: detection of MCP-1 in mouse testis. The antibody has been used in a 10x dilution, the magnification was 200x.

Dilutions to be used depend on detection system applied. It is recommended that users test the reagent and determine their own optimal dilutions. The typical starting working dilution is 1:50.

- IHC-F: F: Sections (6 µm) were fixed with 4% PFA, blocked using 0.1% Triton-X and 5% serum for 15min at 37°C or o/n 4 °C and then incubated with 2 µg/ml antibody for 2h at 37°C.
- W: Samples electrophoresed on 15% SDS-PAGE were blotted on nitrocellulose and blocked with PBS/5% low fat dry milk. The blot was incubated with antibody (0.8 µg/ml) for 20min at RT.

General Information
Description

The monoclonal antibody ECE.2 recognizes mouse monocyte chemoattractant protein 1 (MCP-1). The murine JE gene encodes the monocyte-specific cytokine monocyte chemotactic protein 1 (MCP-1). MCP-1 is a CC chemokine of 76 amino acids (~11 kDa) and is chemotactic for monocytes and basophils but not neutrophils and eosinophils. MCP-1 is expressed by smooth muscle cells (SMC), macrophages, endothelial cells, keratinocytes and fibroblasts in response to inflammatory stimuli such as interleukin 1β and tumor necrosis factor α. MCP-1 has been implicated in a variety of inflammatory processes, including inflammatory bowel disease, rheumatoid arthritis, asthma, nephritis, and parasitic and viral infections. MCP-1 antigen is not detected in the endothelium or SMC of normal arteries. MCP-1 has also been shown to exhibit biological activities other than chemotaxis. It can induce the proliferation and activation of killer cells known as CHAK (CC-Chemokine-activated killer)

MCP-1 signals via the CCR2 receptor, and is critical for aneurysm formation because of its stability to recruit leukocytes. These leukocytes produce extracellular matrix-degrading MMPs, thereby inductin aortic remodelling and dilatation. Interleukin-6 is also involved in this amplification loop accelerating vascular inflammation. MCP-/- mice display significantly delayed wound re-epithelialization, and also delayed wound angiogenesis.

Immunogen

Synthetic peptide corresponding to residues 102-130 of mouse MCP-1

| | |
|------------------------------|--|
| Aliases | C-C motif chemokine 2, Monocyte chemotactic and activating factor, Monocyte secretory protein JE, Small-inducible cytokine A2, Sigje |
| Gene | Gene name: Ccl2 |
| Cross reactivity | Human MCP-1: No |
| References | <ol style="list-style-type: none"> 1. Zoja, C et al; Renal expression of monocyte chemoattractant protein-1 in lupus autoimmune mice. J Am Soc Nephrol 1997, 8: 720 2. Kimura, Y et al; Facilitating action of asiaticoside at low doses on burn wound repair and its mechanism. Eur J Pharmacol 2008, 584: 415 3. Tieu, B et al. An adventitial IL-6/MCP1 amplification loop accelerates macrophage-mediated vascular inflammation leading to aortic dissection in mice. J Clin Invest 2009, 119: 3637 |
| Storage&stability | Product should be stored at 4°C. Under recommended storage conditions, product is stable for at least one year. |
| Precautions | For research use only. Not for use in or on humans or animals or for diagnostics. It is the responsibility of the user to comply with all local/state and federal rules in the use of this product. Hycult Biotech is not responsible for any patent infringements that might result from the use or derivation of this product. |

We hereby certify that the above-stated information is correct and that this product has been successfully tested by the Quality Control Department. This product was released for sale according to the existing specifications. This document has been produced electronically and is valid without a signature.

Approved by Manager of QC
Brenda Teunissen

Date
11/11/2019

Do you have any questions or comments regarding this product? Please contact us via support@hycultbiotech.com.