

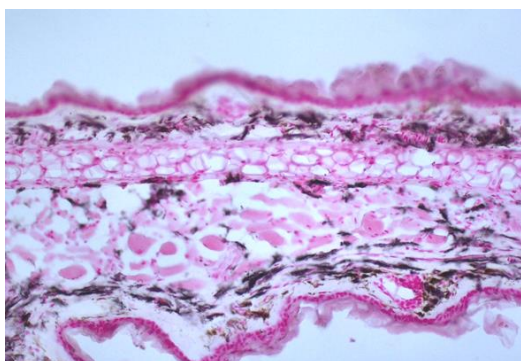
**CERTIFICATE OF ANALYSIS – TECHNICAL DATA SHEET**

|                       |                                |                      |           |
|-----------------------|--------------------------------|----------------------|-----------|
| <b>Product name</b>   | MGL, Mouse, clone ER-MP23      | <b>Expiry date</b>   | -         |
| <b>Catalog number</b> | HM1081-100UG                   |                      |           |
| <b>Lot number</b>     | -                              | <b>Amount</b>        | 100 µg    |
| <b>Volume</b>         | 1 ml                           | <b>Concentration</b> | 100 µg/ml |
| <b>Formulation</b>    | 0.2 µm filtered in PBS+0.1%BSA | <b>Conjugate</b>     | None      |
| <b>Host Species</b>   | Rat IgG2a                      | <b>Purification</b>  | Protein G |
| <b>Endotoxin</b>      | <24 EU/mg                      |                      |           |
| <b>Storage</b>        | 4°C                            |                      |           |

**Application notes**

|             | IHC-F | IHC-P | IF | FC | FS | IA | IP | W |
|-------------|-------|-------|----|----|----|----|----|---|
| Reference # | 1-3   |       |    |    |    |    |    |   |
| Yes         | •     | •     |    | •  | •  |    |    |   |
| No          |       |       |    |    |    |    |    |   |
| N.D.        |       |       | •  |    |    | •  | •  | • |

*N.D.= Not Determined; IHC = Immuno histochemistry; F = Frozen sections; P = Paraffin sections; IF = Immuno Fluorescence; FC = Flow Cytometry; FS = Functional Studies; IA = Immuno Assays; IP = Immuno Precipitation; W = Western blot*



IHC-F: Immunohistochemistry on frozen C3H / HeN ear section stained with Clone ER-MP23 (5 µg/mL).

Dilutions to be used depend on detection system applied. It is recommended that users test the reagent and determine their own optimal dilutions. The typical starting working dilution is 1:50.

- FS: For blocking studies in vitro, dilutions have to be made according to the amounts of MGL to be inactivated. The antigen is glutaraldehyde (0.05%) resistant.

**General Information**

**Description** The monoclonal antibody ER-MP23 specifically reacts with the macrophage galactose-specific lectin (MGL), a 38 kDa single chain surface glycoprotein. MGL is found on murine mature macrophages in the connective tissue neighboring epithelia of e.g. salivary glands, capsule of lymph nodes, thymus and various other organs. MGL is present on the surface of connective tissue macrophages and their precursor cells in bone marrow. Also, MGL is expressed in macrophage cell lines (e.g. J774-1.6, RAW309Cr.1 and WR19M.1). Expression levels of MGL are increased in mature macrophages. The antigen is co expressed with the antigen recognized by monoclonal antibody BM8 (HM1066). The monoclonal antibody ER-MP23 has been raised after immunization of rats with mouse macrophage cell lines. Blocking studies demonstrated that the monoclonal antibody ER-MP23 is able to block mouse MGL.

**Immunogen** Mouse macrophage cell lines

**Aliases** Macrophage galactose-specific lectin, CD301, dendritic cell-asialoglycoprotein receptor, DC-ASGPR

**References** 1. Jansen, A et al; Immunohistochemical characterization of monocytes-macrophages and dendritic cells involved in the initiation of the insulinitis and beta-cell destruction in NOD mice. *Diabetes* 1994, 43: 667

2. Rosmalen, J et al; Islet abnormalities associated with an early influx of dendritic cells and macrophages in NOD and NODscid mice. *Lab Invest* 2000, *80*: 769
3. Abadie, V et al; Neutrophils rapidly migrate via lymphatics after Mycobacterium bovis BCG intradermal vaccination and shuttle live bacilli to the draining lymph nodes. *Blood* 2005, *106*:1843

**Storage&stability** Product should be stored at 4°C. Under recommended storage conditions, product is stable for at least one year.

**Precautions** For research use only. Not for use in or on humans or animals or for diagnostics. It is the responsibility of the user to comply with all local/state and federal rules in the use of this product. Hycult Biotech is not responsible for any patent infringements that might result from the use or derivation of this product.

---

We hereby certify that the above-stated information is correct and that this product has been successfully tested by the Quality Control Department. This product was released for sale according to the existing specifications. This document has been produced electronically and is valid without a signature.

Approved by Manager of QC  
Brenda Teunissen

Date  
12/11/2019

Do you have any questions or comments regarding this product? Please contact us via [support@hycultbiotech.com](mailto:support@hycultbiotech.com).