

CERTIFICATE OF ANALYSIS – TECHNICAL DATA SHEET

Product name CRAMP, Mouse, clone LF7-BB3

Catalog number HM1127-20UG

Lot number -

Expiry date -

Volume 200 µl

Amount 20 µg

Formulation 0.2 µm filtered in PBS+0.1%BSA

Concentration 100 µg/ml

Host Species Mouse IgG1

Amount None

Endotoxin < 24 EU/mg

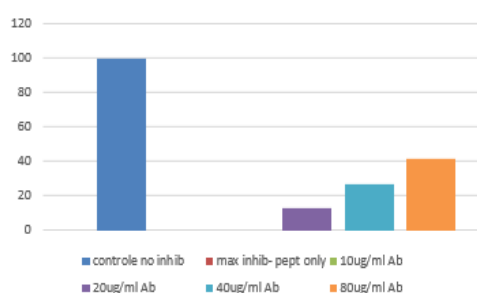
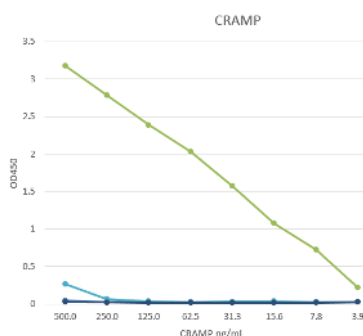
Purification Protein G

Storage 4°C

Application notes

	IHC-F	IHC-P	IF	FC	FS	IA	IP	W
Reference #								
Yes					•	•		
No								•
N.D.	•	•	•	•			•	

N.D.= Not Determined; IHC = Immuno histochemistry; F = Frozen sections; P = Paraffin sections; IF = Immuno Fluorescence; FC = Flow Cytometry; FS = Functional Studies; IA = Immuno Assays; IP = Immuno Precipitation; W = Western blot



IA: Direct ELISA with different CRAMP antibodies. Clone LF7-BB3 reacts with the coated CRAMP peptide.

FS: The bacterial activity of cramp peptide can be blocked with HM1127 in a dose dependent way.

Dilutions to be used depend on detection system applied. It is recommended that users test the reagent and determine their own optimal dilutions. The typical starting working dilution is 1:50.

- IA: Antibody clone LF7-BB3 used as capture and detection antibody.
- FS: The bacterial activity of cramp peptide can be blocked in a dose dependent way.

General Information

Description

The monoclonal antibody LF7-BB3 recognizes the mouse protein Cathelin-Related AntiMicrobial Peptide (Cramp). Cathelicidins are a family of antimicrobial proteins predominantly found in the peroxidase-negative granules of neutrophils. the cathelicidins are synthesized as preproteins. Within the neutrophils, they are stored in granules as inactive proforms after removal of the signal peptide. The biologic active domains of the cathelicidins reside in the C-terminus. The C-terminal antimicrobial peptides are activated when cleaved from the proforms of the cathelicidins by serine proteases from azurophilic granules. Cramp (Cathelin-Related Anti-Microbial Peptide) is the mouse analogue of human LL-37 peptide, which is the antibacterial C-terminus of hCAP-18 (human cathelicidin). CRAMP forms an amphipathic α -helix similar to other antimicrobial peptides. Cramp is a potent antibiotic against Gram-negative bacteria by inhibiting growth of a variety of bacterial strains and by permeabilizing the inner membrane of E.coli directly. Abundant expression of Cramp is found in myeloid precursors and neutrophils. Cramp represents the first antibiotic peptide found in cells of myeloid lineage in the mouse. Inflammatory cells in the mouse can thus use a non-oxidative mechanism for microbial killing. The monoclonal antibody LF7-BB3 is suitable as a capture and/or detection in an immunoassay (ELISA).

Immunogen

Full length mouse CRAMP peptide.

Aliases	Cathelicidin antimicrobial peptide, Cathelin-like protein, CLP		
Gene	Gene name: Camp, Cnlp, Cramp	Entrez Gene ID: 12796	Uniprot: P51437
Storage&stability	Product should be stored at 4°C. Under recommended storage conditions, product is stable for at least one year.		
Precautions	For research use only. Not for use in or on humans or animals or for diagnostics. It is the responsibility of the user to comply with all local/state and federal rules in the use of this product. Hycult Biotech is not responsible for any patent infringements that might result from the use or derivation of this product.		

We hereby certify that the above-stated information is correct and that this product has been successfully tested by the Quality Control Department. This product was released for sale according to the existing specifications. This document has been produced electronically and is valid without a signature.

Approved by Manager of QC
Brenda Teunissen

Date
13/11/2020

Do you have any questions or comments regarding this product? Please contact us via support@hycultbiotech.com.