

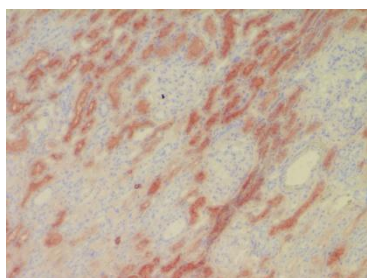
CERTIFICATE OF ANALYSIS – TECHNICAL DATA SHEET

Product name	L-FABP, Human, clone L2B10		
Catalog number	HM2049-500UG		
Lot number	-	Expiry date	-
Volume	-	Amount	500 µg
Formulation	0.2 µm filtered in PBS	Concentration	>0.5 mg/ml
Host Species	Mouse IgG2b	Conjugate	None
Endotoxin	N.A.	Purification	Protein G
Storage	4°C		

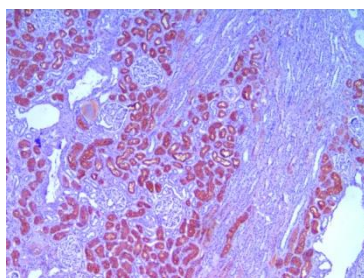
Application notes

	IHC-F	IHC-P	IF	FC	FS	IA	IP	W
Reference #								
Yes	•	•				•		•
No								
N.D.			•	•	•		•	

N.D.= Not Determined; IHC = Immunohistochemistry; F = Frozen sections; P = Paraffin sections; IF = Immuno Fluorescence; FC = Flow Cytometry; FS = Functional Studies; IA = Immuno Assays; IP = Immuno Precipitation; W = Western blot



IHC-F: Immunohistochemical analysis of human L-FABP in frozen human kidney tissue. The antibody concentration used was 1.9 µg/ml.



IHC-P: Immunohistochemical analysis of human L-FABP in paraffin embedded human kidney tissue. The antibody concentration used was 0.95 µg/ml.

Dilutions to be used depend on detection system applied. It is recommended that users test the reagent and determine their own optimal dilutions. The typical starting working dilution is 1:50.

- P: For antigen retrieval both Tris-HCL and glycine buffer can be used.
- W: Reduced sample treatment. The band size is ~15 kDa.

General Information

Description	The monoclonal antibody L2B10 recognizes human liver fatty acid binding protein (L-FABP) of both natural and recombinant origin. The L-FABP protein is derived from the human FABP1 gene. FABPs are small intracellular proteins (~13-14 kDa) with a high degree of tissue specificity that bind long chain fatty acids. They are abundantly present in various cell types and play an important role in the intracellular utilization of fatty acids, transport and metabolism. There are at least nine distinct types of FABP, each showing a specific pattern of tissue expression. Due to its small size, FABP leaks rapidly out of ischemically damaged necrotic cells leading to a rise in serum levels. Ischemically damaged tissues are characterized histologically by absence (or low presence) of FABP facilitating recognition of such areas. L-FABP is localized in the liver, kidney and intestinal epithelium. The monoclonal antibody L2B10 is useful to detect ischemic areas of human liver. Furthermore, the antibody can be used for the purification of human L-FABP.
Aliases	Human liver fatty acid binding protein, FABP1, Liver-type fatty acid-binding protein
Gene	Gene name: FABP1, FABPL
Cross reactivity	Baboon L-FABP: Yes; Dog L-FABP: Yes; Rat L-FABP: Yes; Swine L-FABP: Yes; Human H-FABP: Weak.
References	1. Bax, D et al; High-grade dysplasia in Barrett's esophagus is associated with increased expression of calgranulin A and B. Scand J Gastroenterology 2007, 42: 902

Storage&stability Product should be stored at 4°C. Under recommended storage conditions, product is stable for at least one year.

Precautions For research use only. Not for use in or on humans or animals or for diagnostics. It is the responsibility of the user to comply with all local/state and federal rules in the use of this product. Hycult Biotech is not responsible for any patent infringements that might result from the use or derivation of this product.

We hereby certify that the above-stated information is correct and that this product has been successfully tested by the Quality Control Department. This product was released for sale according to the existing specifications. This document has been produced electronically and is valid without a signature.

Approved by Manager of QC
Brenda Teunissen

Date
05/11/2019

Do you have any questions or comments regarding this product? Please contact us via support@hycultbiotech.com.