

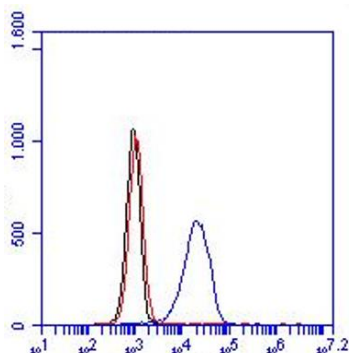
CERTIFICATE OF ANALYSIS – TECHNICAL DATA SHEET

Product name	TLR2, Human, clone TL2.3, FITC conjugated		
Catalog number	HM2066F-100UG		
Lot number	-	Expiry date	-
Volume	1 ml	Amount	100 µg
Formulation	0.2 µm filtered in PBS+1%BSA+0.02%Na ₃	Concentration	100 µg/ml
Host Species	Mouse IgG2a	Conjugate	FITC
Endotoxin	N.A.	Purification	Protein G
Storage	4°C		

Application notes

	IHC-F	IHC-P	IF	FC	FS	IA	IP	W
Reference #	1,7			4	2-4	6		7
Yes	•		•	•	•	•		•
No		•						
N.D.							•	

N.D.= Not Determined; IHC = Immuno histochemistry; F = Frozen sections; P = Paraffin sections; IF = Immuno Fluorescence; FC = Flow Cytometry; FS = Functional Studies; IA = Immuno Assays; IP = Immuno Precipitation; W = Western blot



FC: Flow cytometry with THP-1 cells. The black line represents cells only, the red line the isotype control and the blue line antibody TL2.3 (2 µg/250000 cells).

Dilutions to be used depend on detection system applied. It is recommended that users test the reagent and determine their own optimal dilutions. The typical starting working dilution is 1:50.

- FS: The monoclonal antibody TL2.3 can be used for stimulation of T cells.

General Information

Description

Toll-like receptors (TLR) are highly conserved throughout evolution and have been implicated in the innate defense to many pathogens. In *Drosophila*, toll is required for the anti-fungal response, while the related 18-wheeler is involved in antibacterial defenses. In mammals, TLR identified as type I transmembrane signaling receptors with pattern recognition capabilities, have been implicated in the innate host defense to pathogens. TLR2 has been identified as a receptor that is central to the innate immune response to lipoproteins of Gram-negative bacteria, several whole Gram-positive bacteria, as well as a receptor for peptidoglycan and lipoteichoic acid and other bacterial cell membrane products. A functional interaction between TLR2 and TLR6 in the cellular response to various bacterial products has been discovered. The currently accepted paradigm regards TLR2 as an essential receptor for many eubacterial cell wall components, including lipoproteins and peptidoglycan. Bacterial species as diverse as mycobacteria, spirochetes, mycoplasma, *Staphylococcus aureus*, and *Streptococcus pneumoniae* have all been shown to mediate cellular activation via TLR2 (CD282). The FITC conjugated monoclonal antibody TL2.3 is specific for human TLR2 (CD282). TL2.3 is useful for studies on the role of TLR2 as a pattern recognition receptor in microbial products induced cytokine production by TLR2 bearing cells such as human peripheral blood mononuclear cells. The human Toll-like receptor 2 (TLR2) is Patent protected by US Patent no. US 7,071,310. License rights on the Patent are acquired from Leiv

Eriksson Nukaping AS, Norway. Hycult Biotech is not responsible for any patent infringements that might result with the use or derivation of this product.

Immunogen	Human TLR2-expressing CHO cells
Aliases	CD282, TIL4, Toll-like receptor 2
Gene	Gene name: TLR2, TIL4
Cross reactivity	Canine: Yes.
References	<ol style="list-style-type: none">1. Flo, T et al; Differential expression of Toll-like receptor 2 in human cells. <i>J Leukoc Biol</i> 2001, <i>69</i>: 4742. Schjetne, K et al; Link between innate and adaptive immunity: Toll-like receptor 2 internalizes antigen for presentation to CD4+ T cells and could be an efficient vaccine target. <i>J Immunol</i> 2003, <i>171</i>: 323. Siedlar, M et al; Tolerance induced by the lipopeptide Pam3Cys is due to ablation of IL-1R-associated kinase 1. <i>J Immunol</i> 2004, <i>173</i>: 27364. Tunheim, G et al; Human receptors of innate immunity (CD14, TLR2) are promising targets for novel recombinant immunoglobulin-based vaccine candidates. <i>Vaccine</i> 2007, <i>25</i>: 47235. Burgener, I et al; Antibodies specific for human or murine Toll-like receptors detect canine leukocytes by flow cytometry. <i>Vet Immunol Immunopathol</i> 2008, <i>124</i>: 1846. Stribos, E et al; Renal expression of Toll-like receptor 2 and 4: Dynamics in human allograft injury and comparison to rodents. <i>Molecular Immunology</i> 2015, <i>64</i>: 82
Storage&stability	Product should be stored at 4°C. Under recommended storage conditions, product is stable for at least one year.
Precautions	For research use only. Not for use in or on humans or animals or for diagnostics. It is the responsibility of the user to comply with all local/state and federal rules in the use of this product. Hycult Biotech is not responsible for any patent infringements that might result from the use or derivation of this product.

We hereby certify that the above-stated information is correct and that this product has been successfully tested by the Quality Control Department. This product was released for sale according to the existing specifications. This document has been produced electronically and is valid without a signature.

Approved by Manager of QC
Brenda Teunissen

Date
29/11/2019

Do you have any questions or comments regarding this product? Please contact us via support@hycultbiotech.com.