

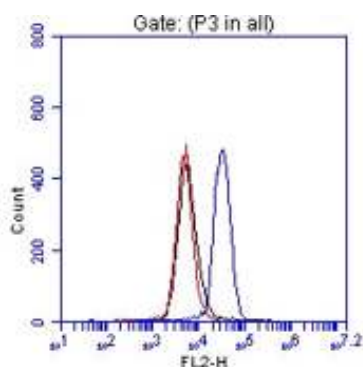
CERTIFICATE OF ANALYSIS – TECHNICAL DATA SHEET

Product name	Protein S, Human, clone PS7, FITC conjugated		
Catalog number	HM2148F-100UG		
Lot number	-	Expiry date	-
Volume	1 ml	Amount	100 µg
Formulation	0.2 µm filtered in PBS+1%BSA+0.02%NaN3	Concentration	100 µg/ml
Host Species	Rat IgG2a	Conjugate	FITC
Endotoxin	N.A.	Purification	Protein G
Storage	4°C		

Application notes

	IHC-F	IHC-P	IF	FC	FS	IA	IP	W
Reference #								
Yes				•				•
No								
N.D.	•	•	•		•	•	•	

N.D.= Not Determined; IHC = Immuno histochemistry; F = Frozen sections; P = Paraffin sections; IF = Immuno Fluorescence; FC = Flow Cytometry; FS = Functional Studies; IA = Immuno Assays; IP = Immuno Precipitation; W = Western blot



FC: Flow cytometric detection of human Protein S in Huvec cells (mAb PS7, Cat.# HM2148). Red, black and green line represents two isotype controls and HM2148 in 4 µg/ml, respectively.

Dilutions to be used depend on detection system applied. It is recommended that users test the reagent and determine their own optimal dilutions. The typical starting working dilution is 1:50.

- FC: Antibody PS7 stains the extracellular domain of Protein S.
- W: A reduced sample treatment and SDS-Page was used. The band size is 70 kDa.
- Positive control: Huvec cells

General Information

Description Monoclonal antibody PS7 is specific for human Protein S (PS), a vitamin K-dependent plasma glycoprotein with a molecular weight of approximately 70 kDa. In humans, PS is mainly synthesized by hepatocytes. Mature PS has a modular structure consisting of a Gla-domain containing a short aromatic stack, a region sensitive to cleavage by thrombin and factor Xa, 4 epidermal growth factor (EGF)-like domains, and a sex hormone-binding globulin-like region. The biologic function of PS thought to be of primary importance is its ability to enhance Activated Protein C-dependent proteolytic inactivation of factors Va and VIIIa, which are respectively the cofactors in the pro-thrombinase and tenase complexes of the coagulation cascade. In this way, PS plays an important role in regulating thrombin generation, and therefore controlling procoagulant activity. Crucial to the APC-dependent functions of PS is the high-affinity interaction between PS and negatively charged phospholipid surfaces, conferred by calcium-induced folding of the amino-terminal Gla-domain. Monoclonal antibody PS7 allows specific detection of cells carrying PS by flow cytometry.

Immunogen	Protein S
Aliases	PROS1, PS
Storage&stability	Product should be stored at 4°C. Under recommended storage conditions, product is stable for at least one year.
Precautions	For research use only. Not for use in or on humans or animals or for diagnostics. It is the responsibility of the user to comply with all local/state and federal rules in the use of this product. Hycult Biotech is not responsible for any patent infringements that might result from the use or derivation of this product.

We hereby certify that the above-stated information is correct and that this product has been successfully tested by the Quality Control Department. This product was released for sale according to the existing specifications. This document has been produced electronically and is valid without a signature.

Approved by Manager of QC
Brenda Teunissen

Date
02/12/2019

Do you have any questions or comments regarding this product? Please contact us via support@hycultbiotech.com.