

Let's improve **health**

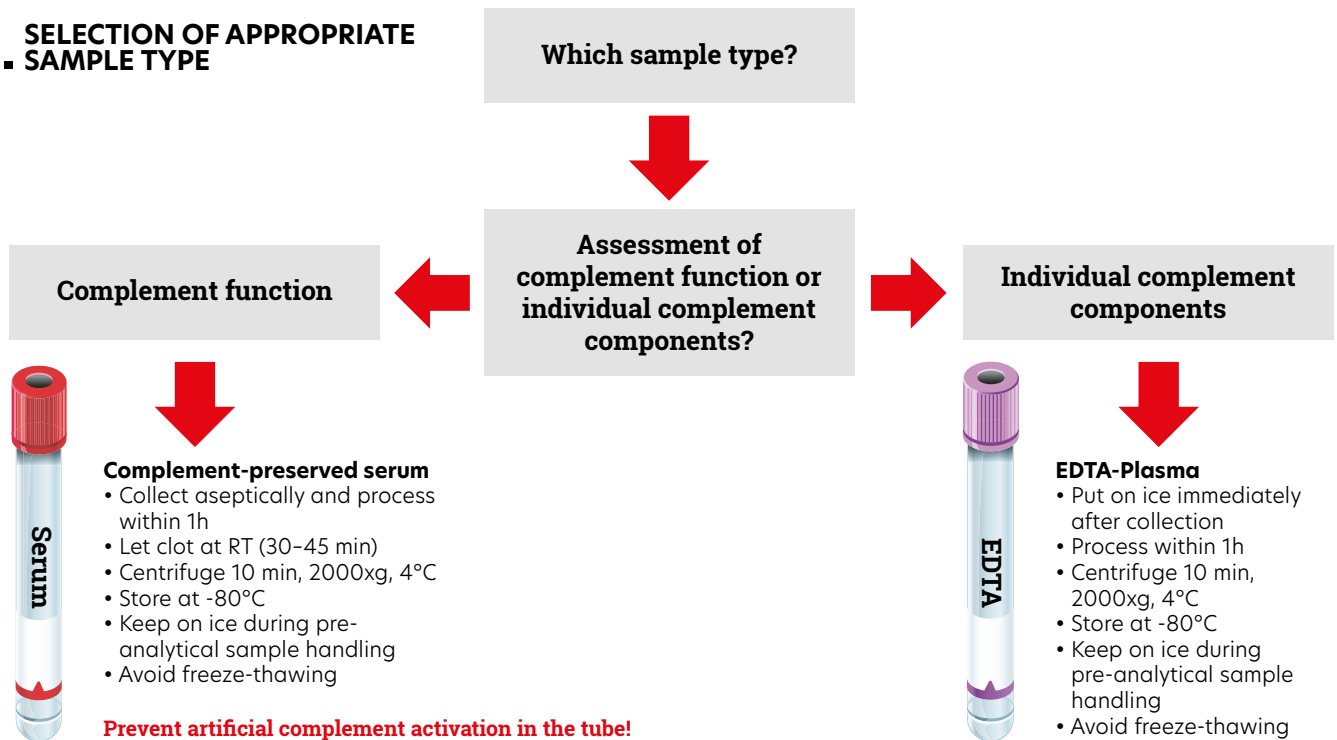
Tools for complement research

Together, we improve **health**.

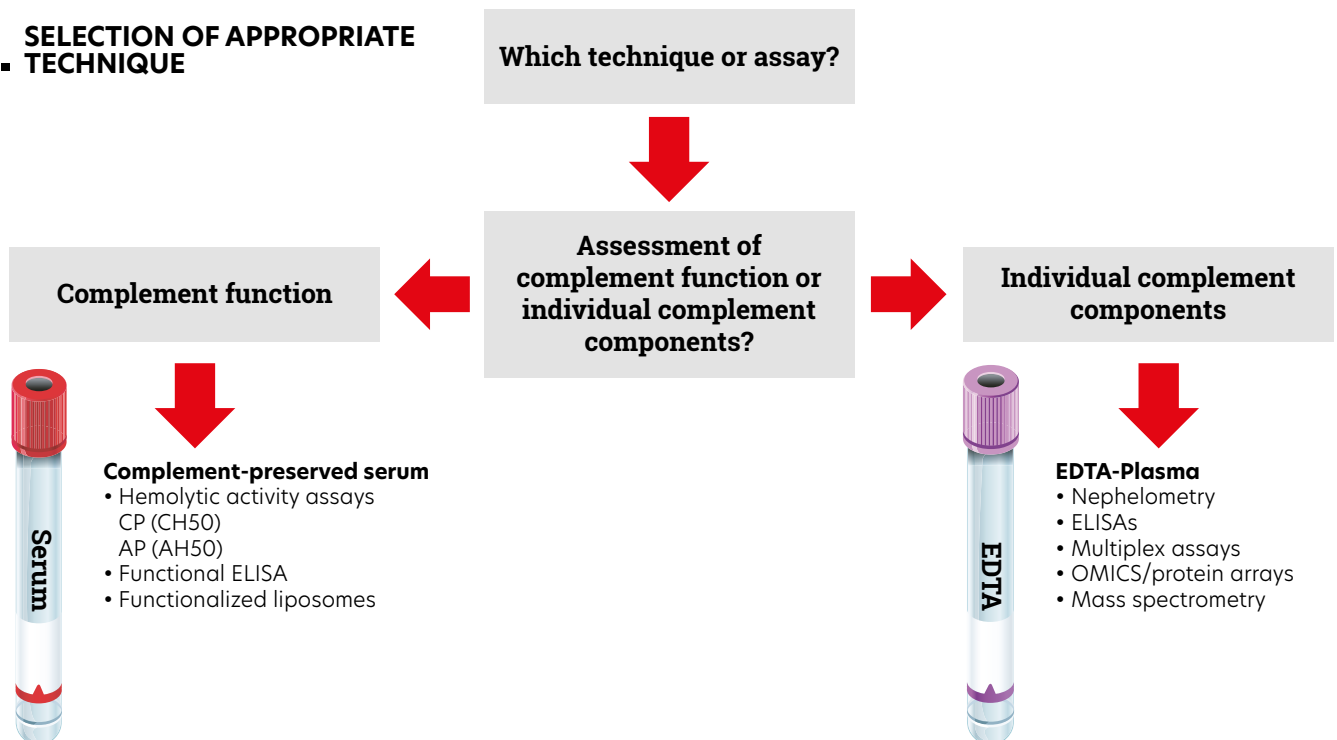
Flowchart

Use the flowchart for the selection of: A) The appropriate sample type or
B) The appropriate technique for the assessment of complement.

A. SELECTION OF APPROPRIATE SAMPLE TYPE



B. SELECTION OF APPROPRIATE TECHNIQUE



General Introduction

As a leading developer and manufacturer of complement research tools, we take pride in our work. Our mission has always been to find answers to your questions and work towards improving health. We have been fulfilling this mission since 1994.

Our team possesses extensive expertise in the development and production of assays, antibodies, and proteins. We are committed to supporting scientists worldwide in their research on human diseases.

Complement

The complement system is a crucial part of the immune system, consisting of a group of proteins that work together to defend the body against infections and support immune responses. It plays a pivotal role in recognizing and eliminating pathogens, promoting inflammation, and facilitating the removal of cellular debris.

Research on the complement system is vital for several reasons. Firstly, it helps in understanding its complex interactions with other components of the immune system, shedding light on the mechanisms behind immune responses. Secondly, studying the complement system aids in developing therapeutic strategies for various immune-related disorders and autoimmune diseases. Especially after the successful introduction of Eculizumab and C1-INH, more complement based therapeutics are approved for clinical trials or use.

Overall, comprehensive research on the complement system contributes to advancing immunology, paving the way for improved treatments and preventive measures for a wide range of health conditions.

Let's improve health

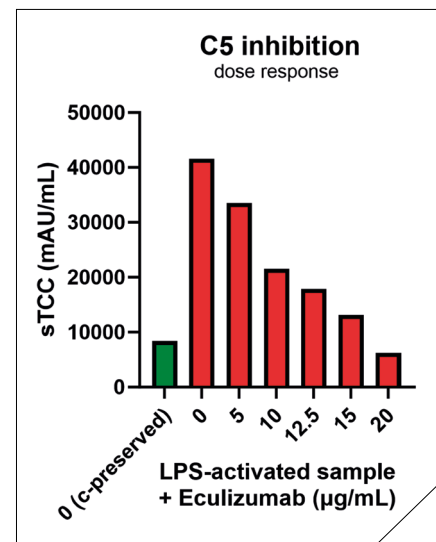
**Looking for other
products related
to complement?**

Visit our website
www.hycultbiotech.com

Validated ELISA kit sample types:

BF: Bronchoalveolar fluid (BAL)	CF: Cerebrospinal fluid
CS: Cell culture supernatant	F: Feces
O: Other	P: Plasma
S: Serum	SA: Saliva
SF: Synovial fluid	SP: Sputum
U: Urine	TH: Tissue homogenate

ELISA kits for human		
Product name	Sample types	Cat. #
Alternative Pathway	S	HK3012 *
C1-INH	P S	HK396
C1s/C1-INH	P S	HK399
C1q	BF P S	HK356 *
C3	P S	HK366 *
C3a	BF P S U	HK354 *
C3bBbP	P S	HK3002** NEW
C3c	P S	HK368
C3d	P S	HK3017 *
C5	P S	HK390 *
C5a	P	HK3490* NEW
C5a	S	HK349
C7	P S	HK3029
Classical Pathway	S	HK3010 *
Collectin-10	P S	HK364
Complement factor B	P S	HK367
Complement factor D	P S U	HK343
Complement factor H (also cross-reactive with FHR-1)	P S U	HK342
Complement factor I	P S U	HK355
Clusterin	P S	HK3026
Factor H, 402H/Y variant detection	P S	HK353
FHR-2	P S	HK3004 *
FHR-3	P S	HK3005
FHR-4	P S	HK3006 *
FHR-5	P S	HK3007
Ficolin-2	CS P S	HK336
Ficolin-3	CS P S	HK340
gC1qR	P	HK362
Lectin Pathway	S	HK3011 NEW
MASP-1/C1-INH	P S	HK3001
MASP-2	CS P S	HK326 *
MBL	CS P S	HK323 *
Properdin	BF CF P S U	HK334 *
sCD59	P S	HK374
TCC	CF CS P SF U	HK328 *



Inhibition by Eculizumab in LPS-activated serum as measured by human sTCC ELISA (Cat.# HK328).

Learn more about: sTCC, sC5b-9 or the membrane attack complex (MAC); its Ambivalent Role: From Immune Defense to Pathological Damage. Go to:



Looking for other products related to complement?

Visit our website
www.hycultbiotech.com

* Cross reactive with non-human primates

** Cross reactive with non-human primates and mouse

ELISA kits for mouse, rat and pig		
Product name	Sample types	Cat. #
Mouse C1q	P S	HK211
Mouse C3	P S	HK2002
Mouse C3b	P S	HK216
Mouse C4	P	HK217
Mouse Alternative pathway	S	HIT422
Mouse Classical pathway	S	HIT420
Mouse Lectin pathway	S	HIT421
Mouse Complement pathway (collection)	S	HIT423
Pig Alternative pathway	S	HIT432
Pig Classical pathway	S	HIT430
Pig Lectin pathway	S	HIT431
Pig Complement pathway (collection)	S	HIT433
Rat Alternative pathway	S	HIT412
Rat Classical pathway	S	HIT410
Rat Lectin pathway	S	HIT411
Rat Complement pathway (collection)	S	HIT413
Rat TCC	P S	HK106

Would you like to check suitability for your study?

Ask the support team to assist you with your research needs on support@hycultbiotech.com

Validated antibody applications:

F: Frozen sections	FC: Flow cytometry
FS: Functional studies	IA: Immunoassay
IF Immunofluorescence	IP: Immunoprecipitation
P: Paraffin sections	W: Western blot

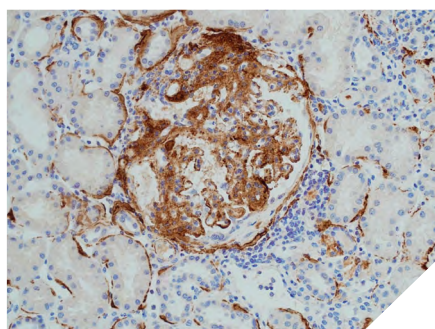
Antibody availability?

Several quantities are available, check our website. Antibodies can also be purchased at 20 µg vial sizes.

Antibodies to human			
Product name	Clone	Applications	Cat. #
Activated C1s	M241	F FC FS IA IP P W	HM2109
Activated C3	bH6	F IA	HM2168
Activated C3	I3/15	IA W	HM2257
C1-INH	15/12	IA W	HM2411
C1q	JL-1	F FS IA IF W	HM2382
C1s	M81	F FC FS IA IP P W	HM2108
C1s	10/12	FS IA W	HM2412
C3 (beta-chain)	169.5	W	HM2377
C3/C3a	2898	IA W	HM2075
C3/C3a	474	IA W	HM2073
C3/C3b	755	IA W	HM2072
C3/C3b/iC3b (alpha-chain)	18.1	IA W	HM2389
C3/C3b/iC3b/C3c	C3-16.4	FS IA	HM2401
C3a/C3a des Arg	2991	IA W	HM2074
C3aR	17	F FC	HM2195
C3b/iC3b	3E7	FC FS IF	HM2286

Antibodies to human			
Product name	Clone	Applications	Cat. #
C3b/iC3b	5G9	FS	HM2285
C3b/iC3b/C3d	1H8	FC IP W	HM2287
C3b/iC3b/C3c	C3-42.3	FS IA W	HM2394
iC3b/C3dg/C3d	C3-122	IA W	HM2395
C3c	4	IP	HM2200
C3c	F1-4	F IA IP W	HM2318
C3d	HB2C2	IA IP W	HM2422
C3d	3	IA IP W	HM2198
C3g	9	IA IP	HM2199
C4c	99-72-18	IA IP W	HM2399
C4d	12D11	F FC IA W	HM2229
C4d	7H4	F IA W	HM2230
C5	10B6	FS IA W	HM2414
C5/C5a	557	FS IA W	HM2077
C5/C5a	561	FS IA	HM2076
C5/C5b	568	IA W	HM2080
C5a/C5a des Arg	2942	F FS IA W	HM2078
C5a/C5a des Arg	2952	F FS IA P W	HM2079
C5a/C5a des Arg	C17/5	IA W	HM2445 NEW
C5aR	S5/1	FC FS P W	HM2094
C5aR	W17/1	F FC P	HM2095
C6	WU6-4	FC FS IA IF IP P W	HM2276
C7	HB2H	IA W	HM2421
C7	HB10G	IA W	HM2425
C7	HB10H	IA W	HM2426
C7	WU4-15	FC IA IF IP W	HM2277
C9	X197	F FC FS IA P W	HM2111
C9 neoantigen	WU13-15	F FC IA IF P W	HM2264
CD11b	Bear-1	F FC IP	HM2125
CD46	M177	F FC FS IA IP W	HM2103
CD55	1C6	FC FS IA W	HM2280
CD55	D17	FC W	HM2105
CD59	MEM-43	FC IP P W	HM2120
Clusterin	2D5	IA W	HM2435
Clusterin	4C7	IA W	HM2436
Collectin-10	4F9D7	IA W	HM2356
Complement factor B/Bb	M13/12	IA IP W	HM2256
Complement factor B/Ba	M20/6	IA IP W	HM2255
Complement factor B/Ba	P21/15	IA IP W	HM2254
Complement factor Ba neo-epitope	D22/3	IA W	HM2379

Antibodies to human			
Product name	Clone	Applications	Cat. #
Complement factor D	D10/4	IA	HM2258
Complement factor D	I8/1	IA	HM2259
Complement factor H	C18/3	IA W	HM2248
Complement factor H	L20/3	IA W	HM2249
Complement factor I	1C11	IA W	HM2320
Complement factor I	MBI-1	IA W	HM2319
FHR2	2.12	W	HM2433
FHR3	3.11	W	HM2427
FHR4	4A.8	W	HM2438
FHR4	pAb	IA W	HP9058
FHR5	5.1	W	HM2430
Ficolin-1	7G1	FC IA W	HM2196
Ficolin-2	GN4	F IA IP	HM2090
Ficolin-2	GN5	F IA IP W	HM2091
Ficolin-3	4H5	F IA IP	HM2089
gC1qR	60.11	FC FS IA IP P W	HM2014
gC1qR	74.5.2	FC FS IA IF IP W	HM2015
MAC	B7	FIAPW	HM2443 NEW
MAP44	2D5B6	IA IP P W	HM2296
MASP-1	4H2A9	IA	HM2297
MASP-1	3/3	IA W	HM2408
MASP-1	100/10	IA W	HM2409
MASP-1/3	1E2	IA IP W	HM2092
MASP-1/3	2B11	IA IP W	HM2093
MASP-2	8B5	IA W	HM2190
MASP-2/MAP19	6G12	IA W	HM2191
MASP-3	38:12-3	IA W	HM2216
MBL	3E7	FC FS IA	HM2061
Pro SP-C	pAb	F P W	HP9050
Properdin	1G6D2	FS IA W	HM2354
Properdin	2.9	IA	HM2282
Properdin	3A3E1	FS IA W	HM2355
Properdin	SIM 295-9.4.3	F FC IA W	HM2283
SP-B	pAb	F P IA W	HP9049
TCC	αE11	FC FS IA IF P	HM2167



C5b-9/MAC staining in human kidney tissue.
Staining of paraffin section with clone B7
(Cat.# HM2443).

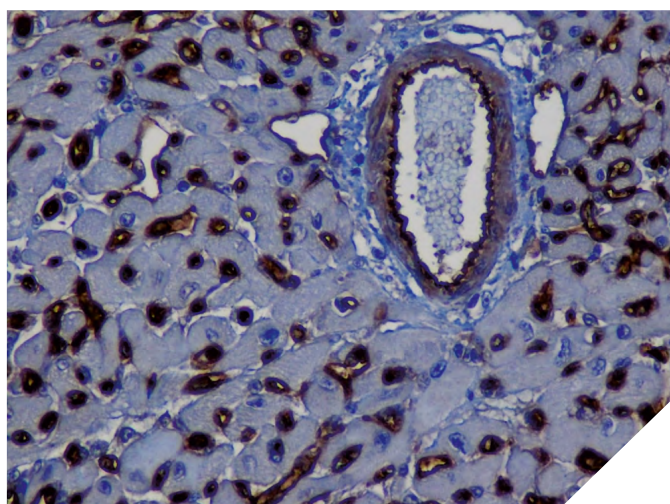
Antibodies to Mouse			
Product name	Clone	Applications	Cat. #
C1q	7H8	F IA IF	HM1044
C1q	JL-1	F FS IA IF W	HM1096
C3	11H9	FC F IA IF W	HM1045
C3	pAb	F IF P W	HP8012
C3a	3/11	FC FS IA W	HM1072
C3aR	14D4	F FC	HM1123
C3b/iC3b/C3c	2/11	F FC FS IA IF W	HM1065
C3b/iC3b/C3c	3/26	F FC FS IA IF W	HM1078
C4	16D2	F FC IA IF IP W	HM1046
C4d	pAb	F FC P W	HP8033
C5	BB5.1	F FS IA IF IP P	HM1073
C5	pAb	W	HP8013
C5aR	10/92	F FC W	HM1077
C5aR	20/70	FC FS IF	HM1076
C6	pAb	F W	HP8014
C9	C9-6-25-5	W	HM1134
CD46	MM10	F FC IA IF W	HM1118
CD55	3D5	FC IA P W	HM1115
CD59a	7A6	F FC FS IA IF W	HM1116
CR1/CR2	7E9	FC IF IP W	HM1112
Crry/p65	8A/E6	IA IF W	HM1117
Factor H	1A2	F IA W	HM1119
MBL-A	2B4	IA W	HM1036
MBL-A	8G6	F IA IF W	HM1035
MBL-C	14D12	F IA IF W	HM1038
MBL-C	16A8	IA W	HM1037
Properdin	E12	FS IA W	HM1138
Properdin	H4	FS IA IF W	HM1139
TCC	12C3	F IA	HM1153

Do you need a custom formulated antibody or bulk?

Please inquire at support@hycultbiotech.com

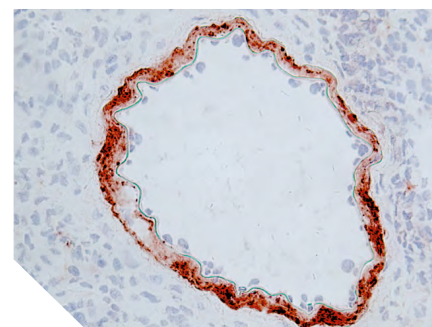
Antibodies to Rat			
Product name	Clone	Applications	Cat. #
C1q	pAb	F IA IP	HP8021
C3	pAb	IA W	HP8022
C3/C3b	2B10B9B2	IA W	HM3031
C3aR	74	F FC	HM3028
C4	pAb	IA IP	HP8023
C4d	pAb	F FC P W	HP8034
C5	4G2	FS IA W	HM3044
C5aR	R63	F FC IF IA W	HM3017
C5b-9	2A1	F FC IA IF P	HM3033
C5L2	pAb	FC FS	HP8018
C6	3G11	F IA IF W	HM3034
CD46	MM1	F IA IF W	HM3038
CD59 Glycoprotein	TH9	F FC FS W	HM3037
Crry	TLD-1C11	F FC FS IA IF W	HM3032
CD55	RDII-24	F FC FS IA W	HM3036
CD55	RDIII-7	F FC FS IF W	HM3035
SP-D	IIIH3	IA P W	HM3022
SP-D	IVG8	IA P W	HM3024
SP-D	VIF9	IA P W	HM3023

Antibodies to Pig			
Product name	Clone	Applications	Cat. #
C3	pAb	FC	HP7003
CD55	PD2	FC IA W	HM4014
SP-B	pAb	IA W	HP7002

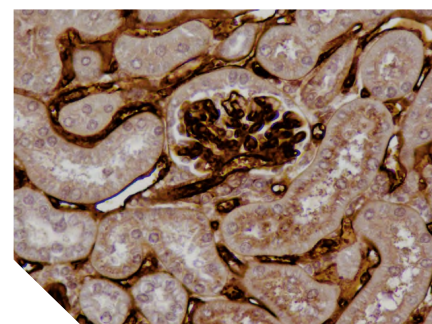


C4d in mouse heart tissue. Staining of paraffin section with polyclonal antibody (Cat. # HP8033)

Human proteins and peptides			
Product name	Species	Quantity	Cat.#
C1q, Natural	Human	1 mg	HC2143
C3, Natural	Human	250 µg	HC2125
C3a, Natural	Human	50 µg	HC2126
C5a, Recombinant	Human	50 µg	HC2101
C5a, Recombinant	Mouse	50 µg	HC1101
C5a des Arg, Recombinant	Human	50 µg	HC2102
C5a des Arg, Recombinant	Mouse	50 µg	HC1102
C9, Natural	Human	250 µg	HC2142
Cobra Venom Factor, Recombinant		50 µg	HC4073
Complement factor H, Natural	Human	250 µg	HC2130



C6 in rat kidney tissue. Staining of frozen section with clone 3G11 (Cat. # HM3034)

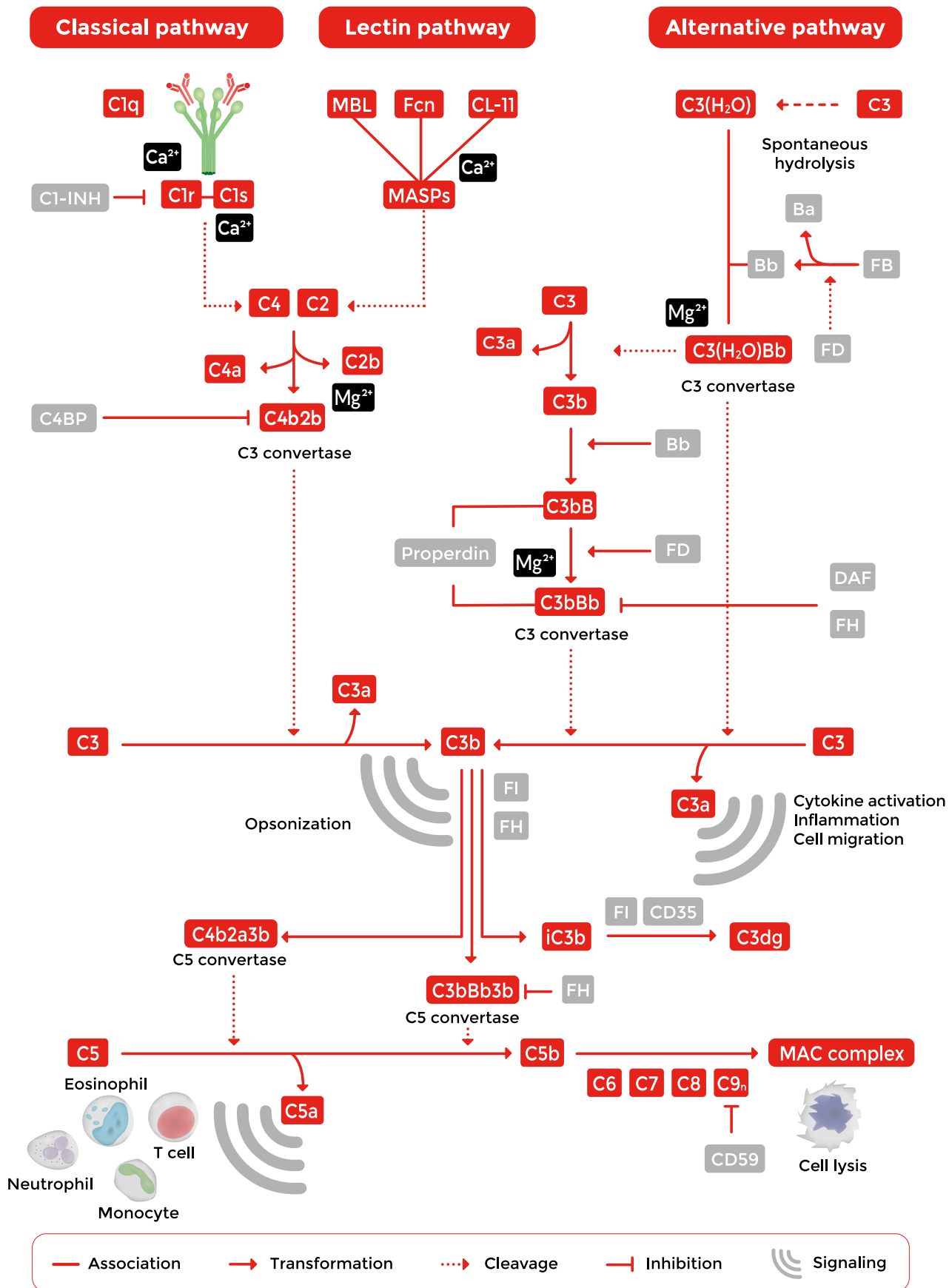


C4d in mouse kidney tissue. Staining of paraffin section with polyclonal antibody (Cat. # HP8033)

At our headquarters in Uden, we, as a privately-owned company, undertake the development, manufacturing, and storage of our products. Our offerings are accessible via our Dutch headquarters, sales office in Wayne (PA) USA, and through our network of over 65 distributors present in over 50 countries.

Since 2008, we have maintained our EN ISO 13485:2016 certification, demonstrating our commitment to meeting the highest standards in the industry.

Take advantage of our dedicated support team for any technical assistance you need while using our products or considering them for your research needs. Contact us directly at support@hycultbiotech.com and let us help you make the most of your scientific endeavors.





What we stand for

- In-house development, production of antibodies and assays
- High quality products for reliable measurements and reproducibility
- Specialized, independent and professional support
- Experts in complement
- Collaboration in scientific projects

Let's improve **health**

Scan for the digital version with links to detailed product information.

www.hycultbiotech.com



Hycult Biotech

Frontstraat 2a
5405 PB Uden
The Netherlands

T +31 (0)413 251335

F +31 (0)413 248353

E info@hycultbiotech.com

Hycult Biotech Inc.

987 Old Eagle Road
STE 709, Wayne
PA 19087, USA

T +1 855 2492858

F +1 484 3683558

E orders-us@hycultbiotech.com

Even though the information provided here is verified and believed to be accurate, there is always a chance that it is imprecise or may be outdated. Please make sure to visit our website www.hycultbiotech.com for the most recent product information and news.